

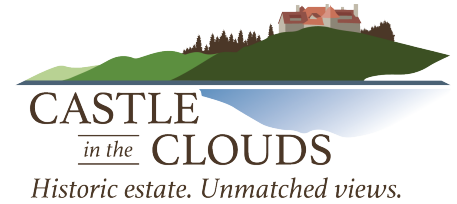
The Land of Lucknow

Post-Visit Activity

Grades/Level: Lower Elementary (K–2), Upper Elementary (3–5)

Subjects: Geography, Wants & Needs

Time Required: Long Activity (60 minutes)



Activity Overview

Using historic and modern resources, determine why groups have lived on and used the land of the Lucknow Estate for hundreds of years.

Learning Objectives

- Children will identify natural resources that are beneficial to human settlement.
- Children will identify the needs and wants of various settlement groups.
- Children will use historic maps, photographs, and virtual resources to gather information.

Activity Steps

- 1.) Now that you've visited Castle in the Clouds, have your child(ren) reflect on the property's natural resources.
- 2.) Have your child(ren) look at the maps on the following pages to understand our site's location and topography, as well as the layout of the earliest settlement.
- 3.) Follow the link or QR code at right to explore our Virtual Library, and learn more about the Plants and other groups that have lived on this land in the past.

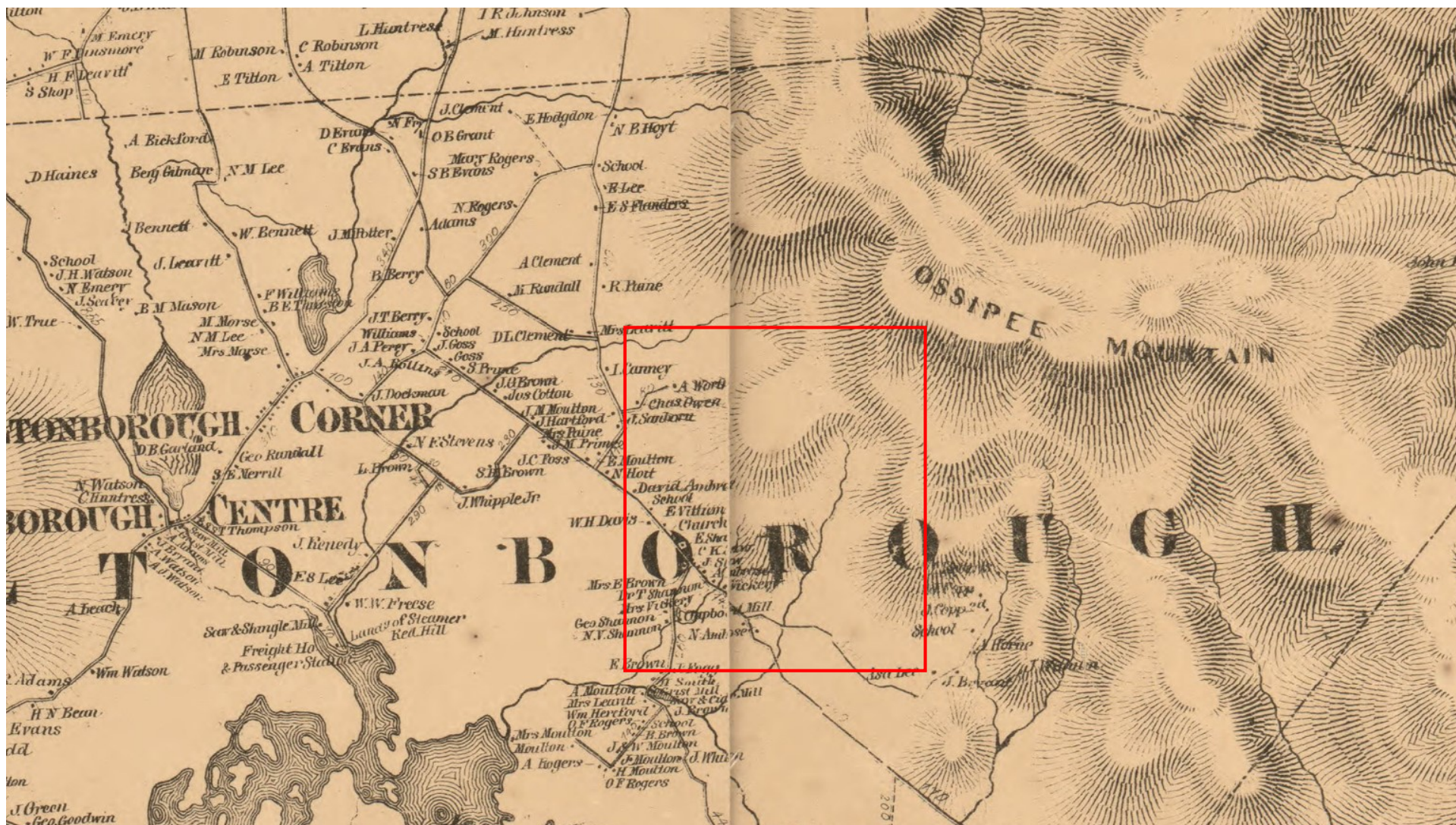
<https://www.castleintheclouds.org/castle-in-the-clouds-home/virtual-library/>



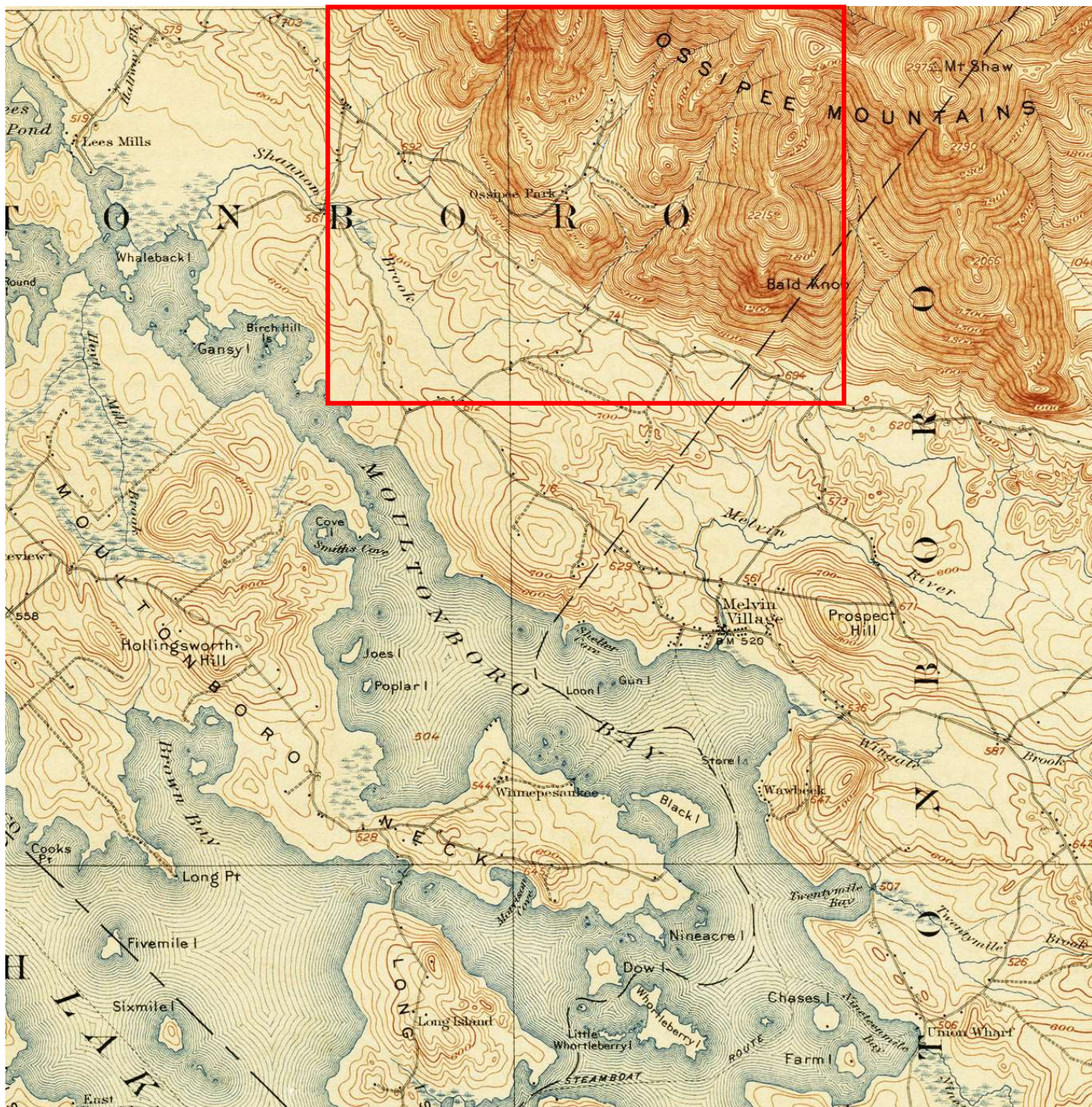
- 4.) Then, discuss or write answers to the following questions:
 - a. Why do you think people wanted to live on this land in the Ossipee Mountains?
 - b. What natural resources would early settlers have needed? Could they find those resources in this area?
 - c. Why do you think B. F. Shaw built his hotel here? Did he and his visitors need and want the same things as the families that built homesteads in the area?
 - d. Why did Tom Plant choose this area for his Lucknow Mansion? How did he change the land?



D.H. Hurd & Co. 1892. Courtesy of David Rumsey Map Collection.

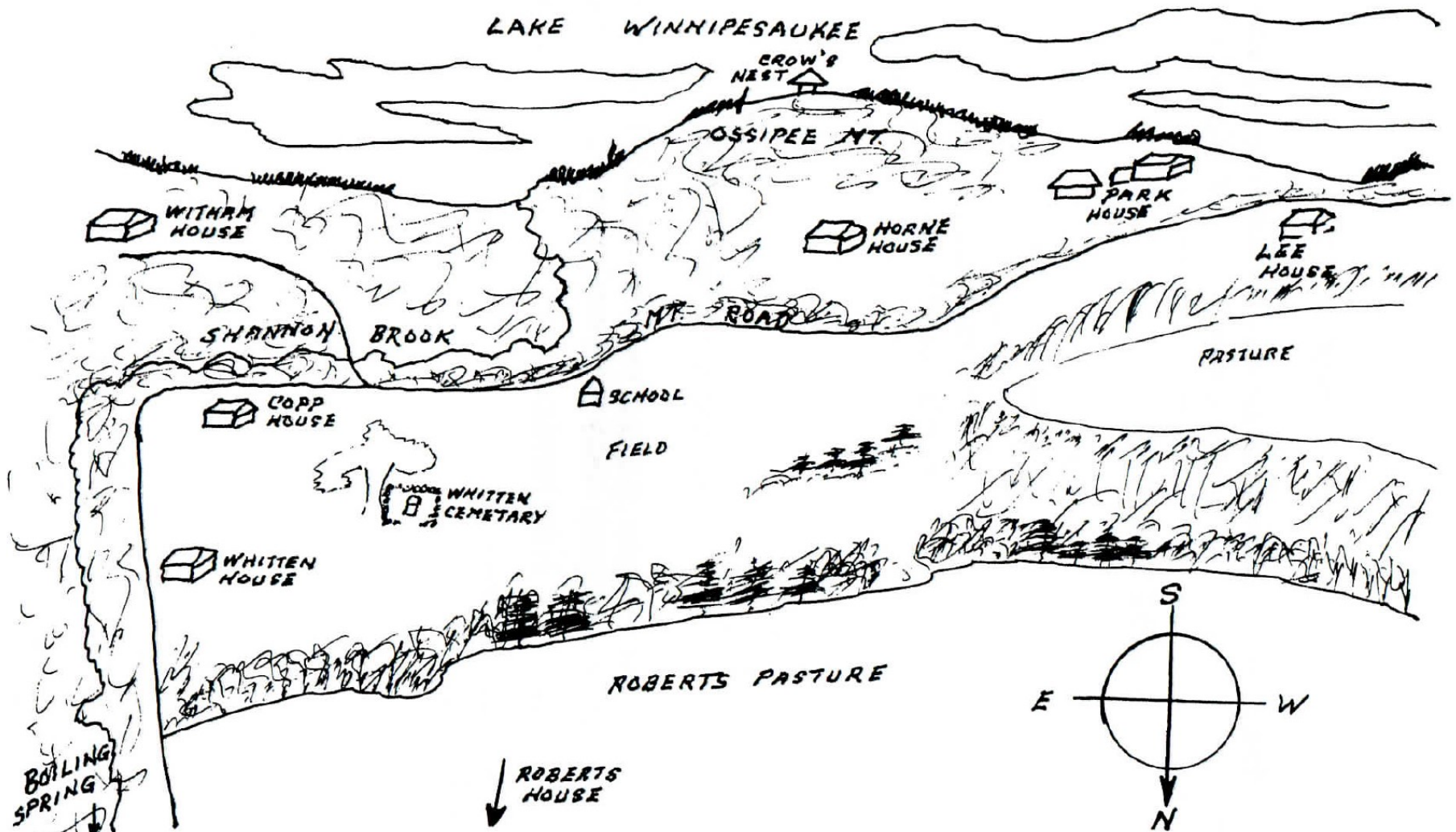


Detail of Smith & Peavey, 1861. Courtesy of Library of Congress.



Detail of US Geological Survey – NH Winnepesaukee Quad, 1909. Courtesy of University of Texas Libraries.

THE MOUNTAIN SETTLEMENT
OF MOULTONBOROUGH
1790 - 1914



Map of the Ossipee Mountain Settlement, from Gilbert Hewins' *The Mountain People of Moultonboro* (Moultonborough Historical Society, 1980).



Photo from a real estate advertisement for the Lucknow Estate, circa 1934. Castle collection.