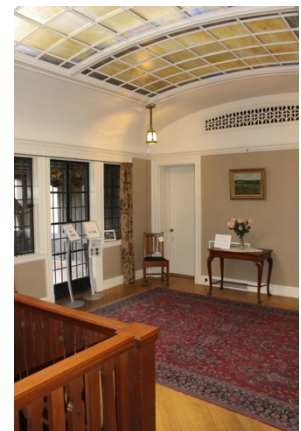
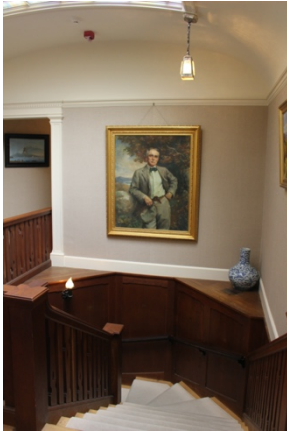


Tour Activity: The Staircase Hall



The Staircase Hall is light, bright and open in comparison to the first floor – this is due to the lighter color scheme and the seven internal skylights. The largest of the skylights is believed to be made from Tiffany glass.

Did you know?

Tom Plant had incorporated a fire suppression system in the home – he hid one of the fire hoses in a closet off of the Staircase Hall.

Explore your own home – do you have pictures hanging throughout your home like Tom and Olive hung Tom's portrait and landscape paintings?
