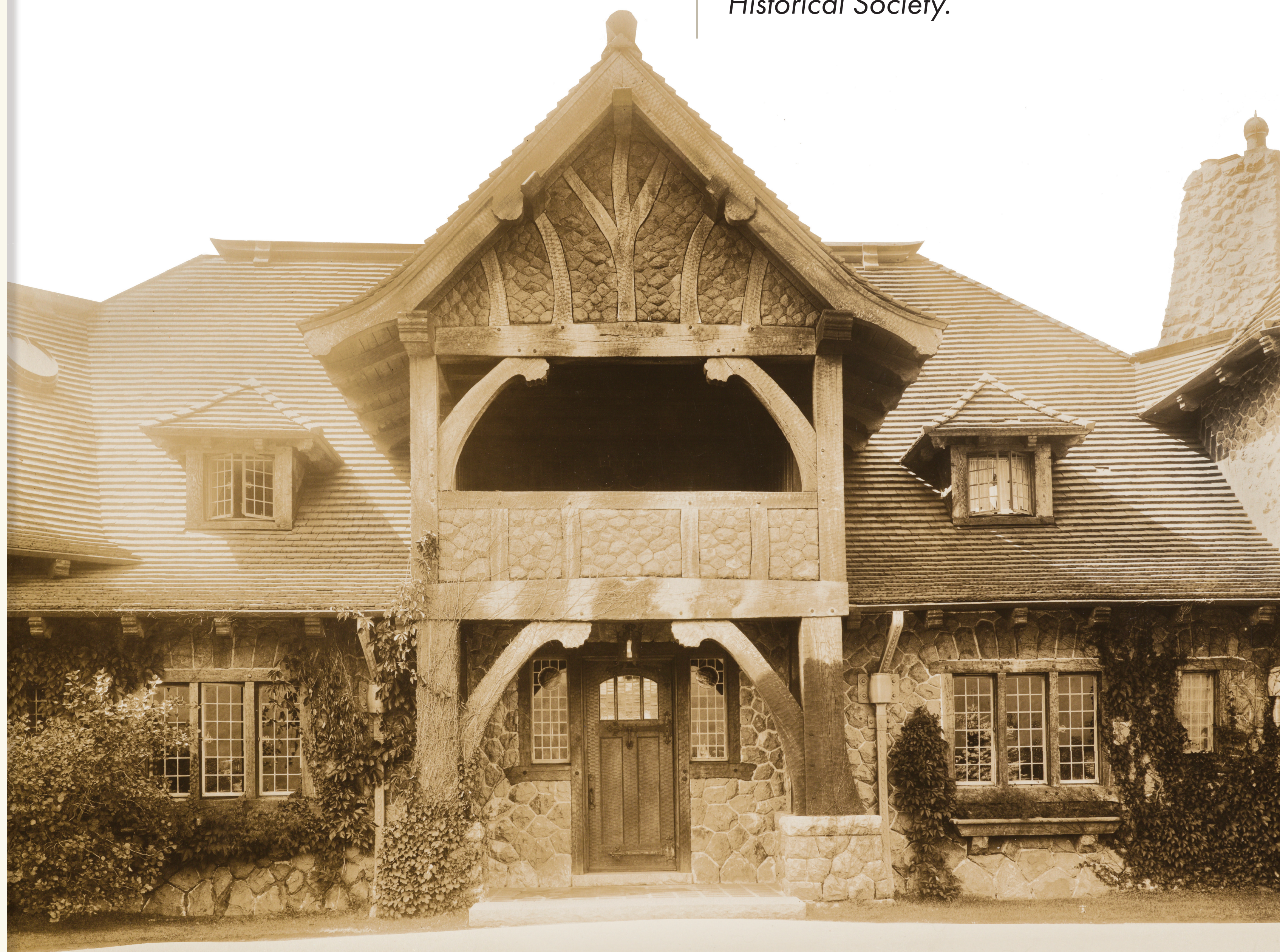


# Unraveling Lucknow's Global Influences

**Thomas Plant, an avid world traveler, stated that the architectural design of his mountaintop mansion was inspired by the building heritages of places like England, Norway, Switzerland, and Japan.**

While architects working in the Arts and Crafts aesthetic did frequently borrow from other architectural traditions, Plant claimed that his architect actually “deplored” such a “mixture of styles and periods.” While we don’t know exactly how much of the Castle’s design stemmed from Plant’s own ideas and worldly travels, versus the expertise of his architect, it’s clear that the final architectural design was a unique concoction of multiple styles.

*Lucknow, c.1917-1924.  
Courtesy of New Hampshire  
Historical Society.*



*Lucknow, c. 1917.  
Courtesy of New Hampshire  
Historical Society.*



## Investigate!

Examine the images below depicting traditional architectural examples from around the world - see if you can pick out any particular Castle features they may have inspired. Lift the flaps for clues.